

SPIRAL 2

Building Design & Construction

Jean-Michel Lagniel & Lorenzo Roupsard

Phase 1 status
Phase 2 status
Message to the DESIR community



Phase 1 Construction

The administrative documents to get the building construction authorization have been sent on July 2009

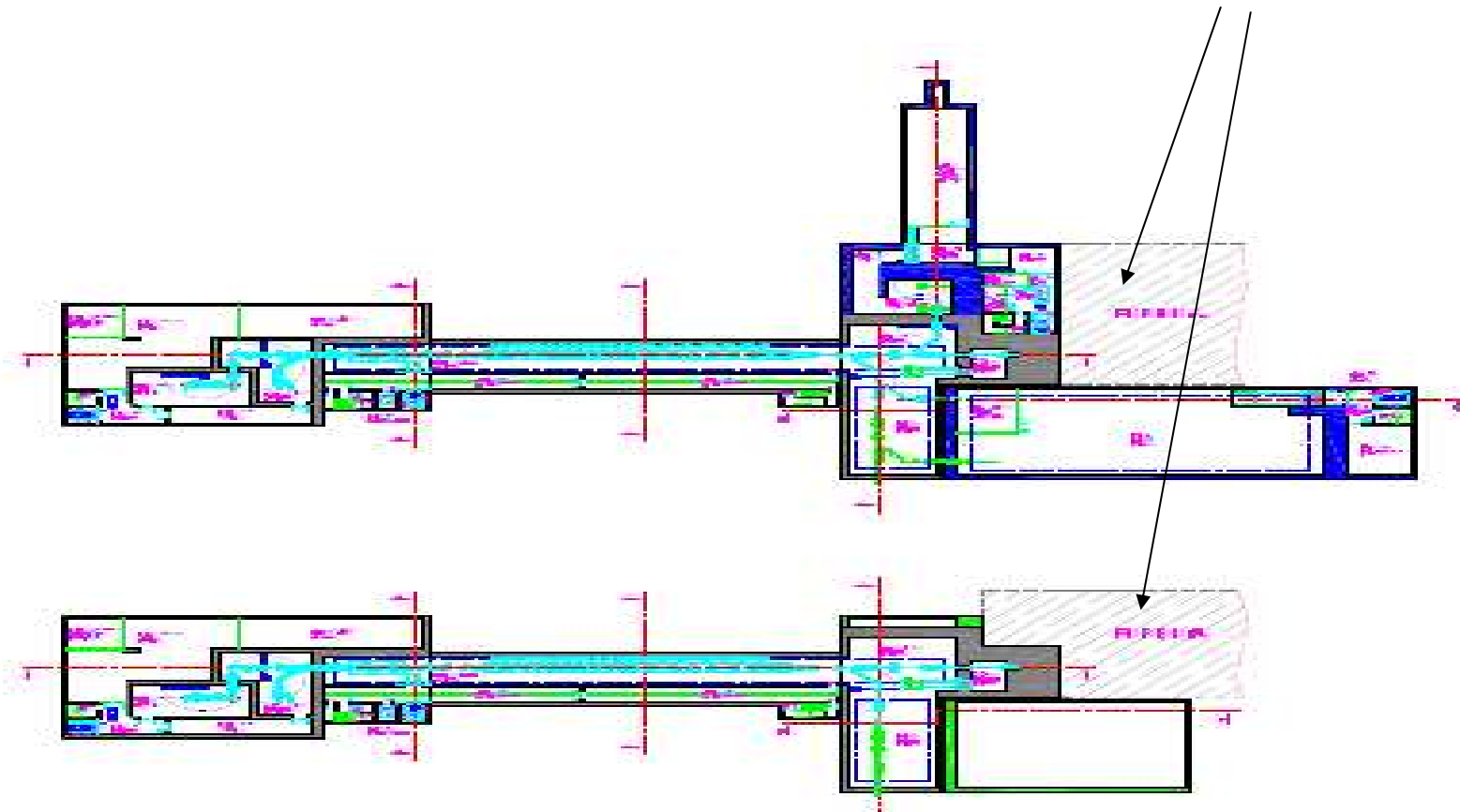
Phase 1 (+ Phase 2' shadow) ground level buildings on the GANIL site



Phase 1 Construction

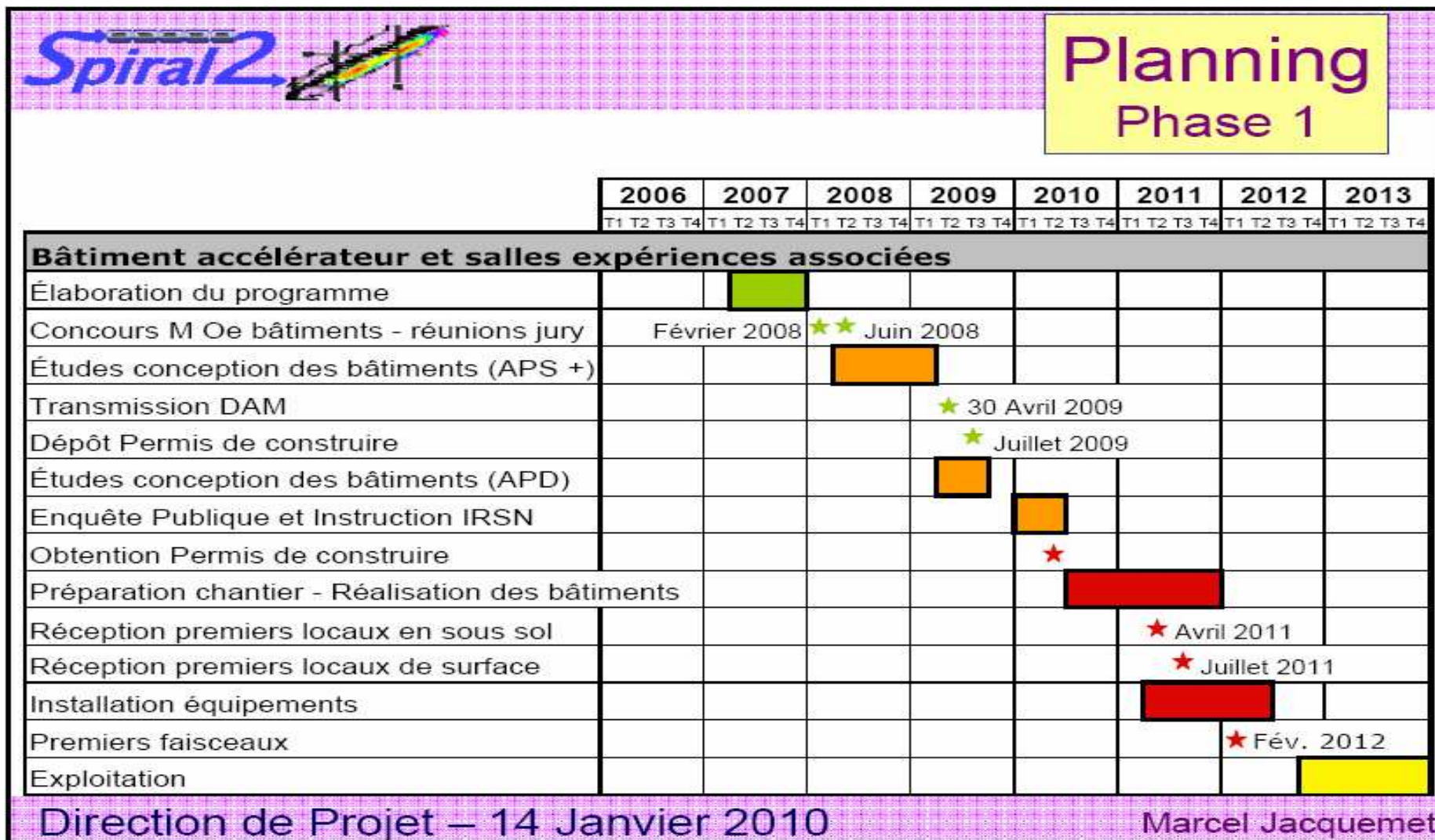
We are at the end of the Design Phase

- Two sets of drawing w / wo AEL
in order to be able to construct Phase 1 wo AEL in case of budget problem
- Designed in such a way that extensions (LINAC and AEL) can be done in the future



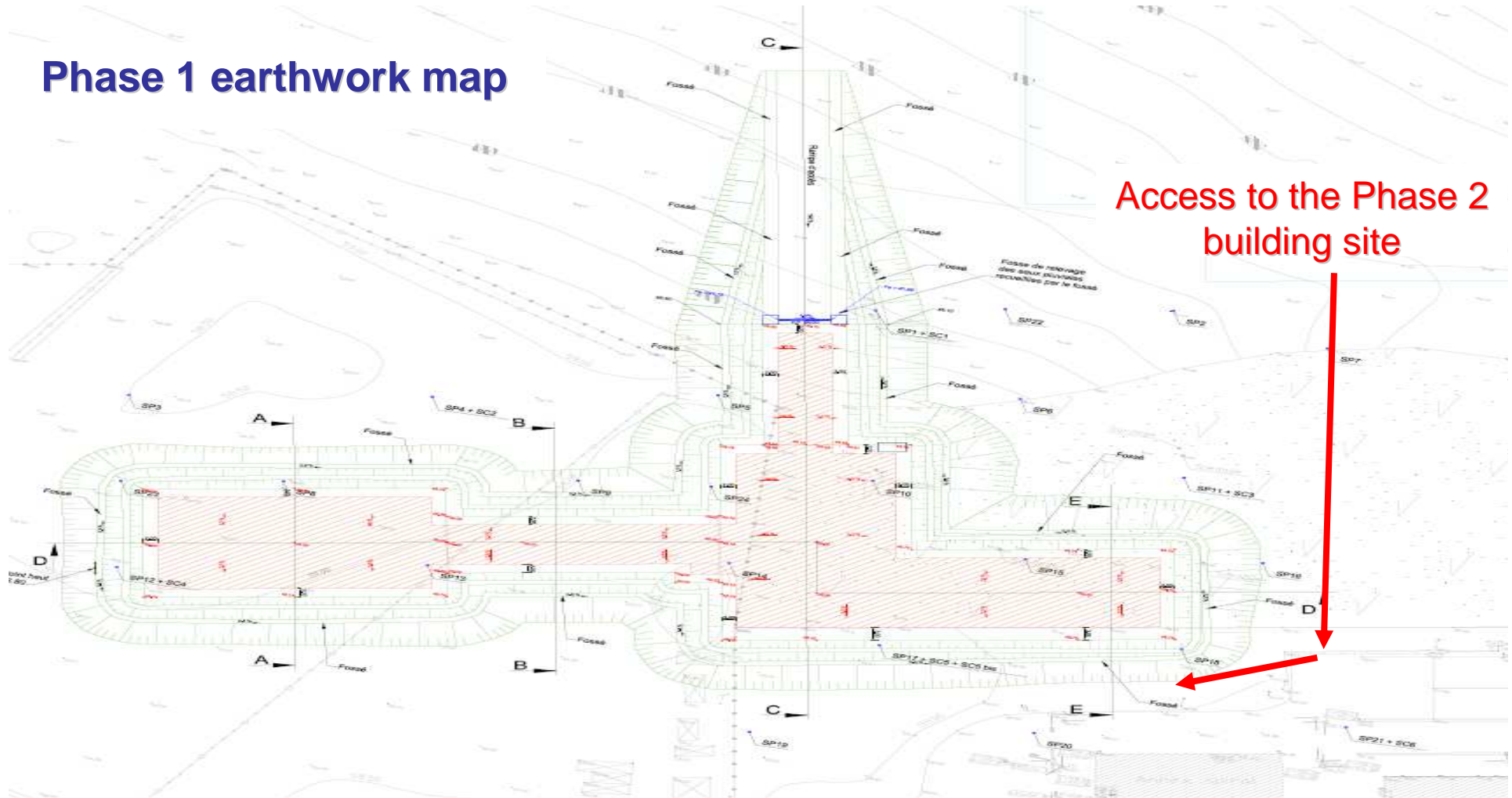


Phase 1 planning and milestones



Ground breaking ceremony date not yet known !

Phase 1 earthwork map



**No filling in the south of the LHE and S3 walls
in order to continue the digging and construction of Phase 2**

Selection of the Building Prime Contractor

Nov 18, 2008 : Publication of the call for candidates

PRODUCTION : Used surface = 3000 m² Estimated cost = 23 M€

DESIR : Used surface = 2300 m² Estimated cost = 5.6 M€

March 12, 2009 : First meeting of the selection committee

Competition between 4 candidates

September 4, 2009 : Reception of the 4 propositions
(building outlines + cost estimates)

October 2, 2009 : Second meeting of the selection committee

2 candidates are still on the track

The Production and DESIR building drawings must not be published because the competition is not finished

April 2010 : The winner will be selected



Phase 2 planning and milestones



Planning Phase 2

	2006				2007				2008				2009				2010				2011				2012				2013							
	T1	T2	T3	T4	T1	T2	T3	T4	T1	T2	T3	T4	T1	T2	T3	T4	T1	T2	T3	T4	T1	T2	T3	T4	T1	T2	T3	T4	T1	T2	T3	T4				
Bâtiment Production et salles expériences associées																																				
Concours M Oe bâtiments - réunions jury																																				
Choix Moe																																				
Études conception des bâtiments (APS +)																																				
Dépôt Permis de construire																																				
Études conception des bâtiments (APD)																																				
Obtention Permis de construire																																				
Signature des marchés de travaux																																				
Terrassements et réalisation des bâtiments																																				
Réception du bâtiment																																				
Installation équipements																																				
Tests																																				

Direction de Projet – 14 Janvier 2010

Marcel Jacquemet

-1- The DESIR building detailed study will be done with the Phase 2 building prime contractor

F You have to be ready to give the detailed information which will allow the DESIR building detailed study (T0 = April)

-2- The decision to construct DESIR must be taken before the beginning of the planning permission paperwork

F You have to make the right lobbying in order to get the decision before the end of this year

-3- If the decision is negative, the decision to construct the DESIR beam lines (at least S3 => DESIR & PROD => DESIR) with the constructions of the PRODUCTION building must be taken if you want to built DESIR “one day”

- 1- The DESIR building detailed study will be done with the Phase 2 building prime contractor
- F You have to be ready to give the detailed information which will allow the DESIR building detailed study (T0 = April)**



- In each room : detailed description of the process, including the needs for**
- accessibility, - ground loading, ground stability,
 - shielding, - access constraints,
 - handling (crane ? equipment installation, ...),
 - electrical distribution, - cooling distribution,
 - air conditioning



Taking -3- into account, start with the DESIR beam lines